

## How to Create a Cutting Edge Digital Page in Adobe® Photoshop® with Digi-matZ®



To create a page like this one, follow these steps.



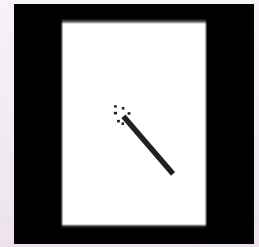
Open a Digi-matZ® Template.



Open an image. Click on *Select*, then *All*. Click on *Edit*, then *Copy*.



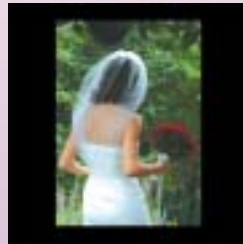
Activate the Digi-matZ® template, then activate the Black Pinstripe Layer.



Using the Magic Wand, click in the opening.



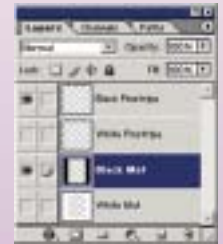
Click on *Edit*, then *Paste Into*.



To enlarge or reduce, click on *Edit*, then *Free Transform*. Holding the shift key, resize and position, then press *Enter*.



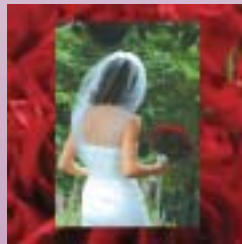
Crop a section of an image using the cropping tool set at 12x12 @300ppi. Click on *Select*, then *All*. Click on *Edit*, then *Copy*.



Activate the Digi-matZ® template, then activate the Black Mat Layer.



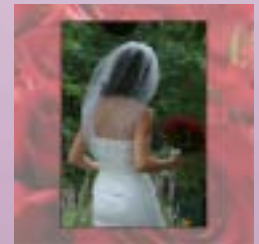
Using the Magic Wand, click on the mat.



Click on *Edit*, then *Paste Into*.



Click on the "eyeball" to turn off the black mat and turn on the white mat.



Reduce the opacity of the custom mat layer.

## How to Create a Custom Cameo Photo in Adobe® Photoshop® with Digi-matZ®



Crop a section of an image using the cropping tool set at 12x12 @300ppi (just like the template).



Drag the image into the template.



Activate the White Mat layer and drag it above the image layer.



Reduce the opacity of the white mat layer.



Using the *text tool*, add text on the mat.



On the menu bar, go to *image*, then size and change the size to 8x8 or 5x5 for a cameo.

